

**IMPORTANT**  
 The Contractor will be responsible for setting out the work. All dimensions must be obtained from or checked on site. Figured dimensions to be used in preference to scale.

**NOTES**

- This drawing to be read in conjunction with SITE CLEARANCE drawings.
- For footway construction see specification below.
- For kerb construction, refer to SMBC standard detail drawing SD/1100/01.
- For sign arrangement, refer to SMBC standard detail drawing SD/1200/03.
- For uncontrolled pedestrian crossing & modular paving, refer to SMBC standard detail drawings SD/1100/05 & SD/1100/10 respectively.
- All signs and road markings to be in accordance with The Traffic Signs Regulations and General Directions 2016 (TSRGD) and Chapter 5 Road Markings 2018.
- Signs to be mounted on 60.1mm SHS steel posts and mounting height 2300mm in accordance with SMBC standard details:  
  
SD/1200/03 R1 sign arrangement;  
SD/1200/04 Sign clearances;  
Unless stated otherwise.
- All existing utility service chamber covers to be reset flush with new surfaces.
- Statutory Undertakers searches/ checked prior to any excavations.

- KEY**
- BN2 Kerb alignment
  - Footway widening
  - Cycleway Route
  - Proposed Road Traffic Sign

Sign Reference	Dia. 956 & 957
Height	300 mm
Width	300 mm
Material	Class B23 (1289-1-2007)
Mount Height	2300

**FOOTWAY CONSTRUCTION SPECIFICATION**  
 All materials are to be supplied and laid in accordance with BS EN 13108. Granite aggregate only, Appendix 3 - Guide to the design of new streets.  
**SURFACE COURSE**  
 20mm (6mm) Nominal size  
**BINDER COURSE**  
 50mm (20mm) Nominal size  
**SUB BASE**  
 100mm Type 1 Stone (MCHW clause 8)



**HIGHWAYS GROUP MANAGER**  
 Robin Weare, B.Sc, C.Eng, M.I.C.E, MBA  
 Sandwell Council House  
 Freeth Street Oldbury  
 West Midlands B69 3DE  
 E-mail: Highways@sandwell.gov.uk

**PROJECT**  
 Towns Fund Improvements – 2-way Cycleway

**LOCATION**  
 High St/Roebuck Lane,  
 West Bromwich

**DRAWING TITLE**  
 General Arrangement  
 Option 1 – Sheet 1

SCALE 1:250m

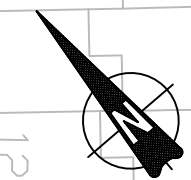
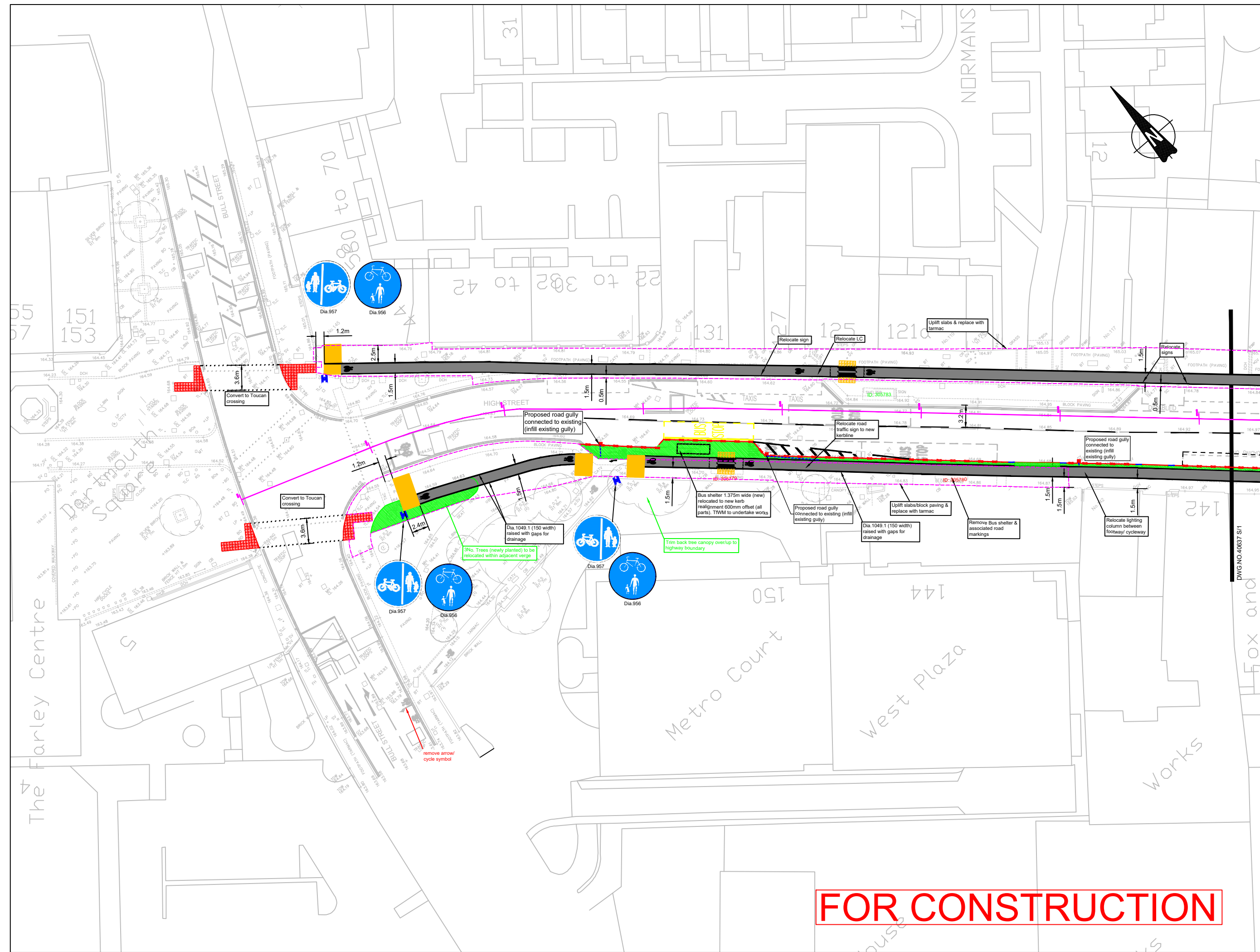
ISSUED BY S. Chadwick

DATE April 2022

DRAWN BY JF

DRAWING No 40636 S/1

**FOR CONSTRUCTION**



DWG NO: 40637 S/1

**IMPORTANT**  
 The Contractor will be responsible for setting out the work. All dimensions must be obtained from or checked on site. Figured dimensions to be used in preference to scale.

**NOTES**

- This drawing to be read in conjunction with site clearance drawing.
- For footway construction see specification below.
- For kerb construction, refer to SMBC standard detail drawing SD/1100/01.
- For sign arrangement, refer to SMBC standard detail drawing SD/1200/03.
- For uncontrolled pedestrian crossing & modular paving, refer to SMBC standard detail drawings SD/1100/05 & SD/1100/10 respectively.
- All signs and road markings to be in accordance with The Traffic Signs Regulations and General Directions 2016 (TSRGD) and Chapter 5 Road Markings 2018.
- Signs to be mounted on 60.1mm SHS steel posts and mounting height 2300mm in accordance with SMBC standard details:

SD/1200/03 R1 sign arrangement;  
 SD/1200/04 sign clearance;  
 Unless stated otherwise,  
 All existing utility service chamber covers to be reset flush with new surfaces.  
 Statutory Undertakers searches/ checked prior to any excavations.

- KEY**
- BN2 Kerb alignment
  - BN (drop kerbs)
  - HB Transition kerbs (left/ right hand)
  - Footway widening (Full depth construction) - Area=513m<sup>2</sup>
  - Proposed Road Traffic Sign

Sign Reference	1503 1506 (Dia. 957)
Height	300 mm
Width	300 mm
Case	3.0 mm
Material	Class RA2 (12899-1-2007)
Mount Height	2300

**FOOTWAY CONSTRUCTION SPECIFICATION**  
 All materials are to be supplied and laid in accordance with BS EN 13108. Granite aggregate only, Appendix 3 - Guide to the design of new streets.  
**SURFACE COURSE**  
 20mm (6mm) Nominal size  
**BINDER COURSE**  
 50mm (20mm) Nominal size  
**SUB BASE**  
 100mm Type 1 Stone (MCHW clause 8)

**Sandwell**  
 Metropolitan Borough Council

**HIGHWAYS GROUP MANAGER**  
 Robin Weare, B.Sc, C.Eng, M.I.C.E, MBA  
 Sandwell Council House  
 Freeth Street Oldbury  
 West Midlands B69 3DE  
 E-mail: Highways@sandwell.gov.uk

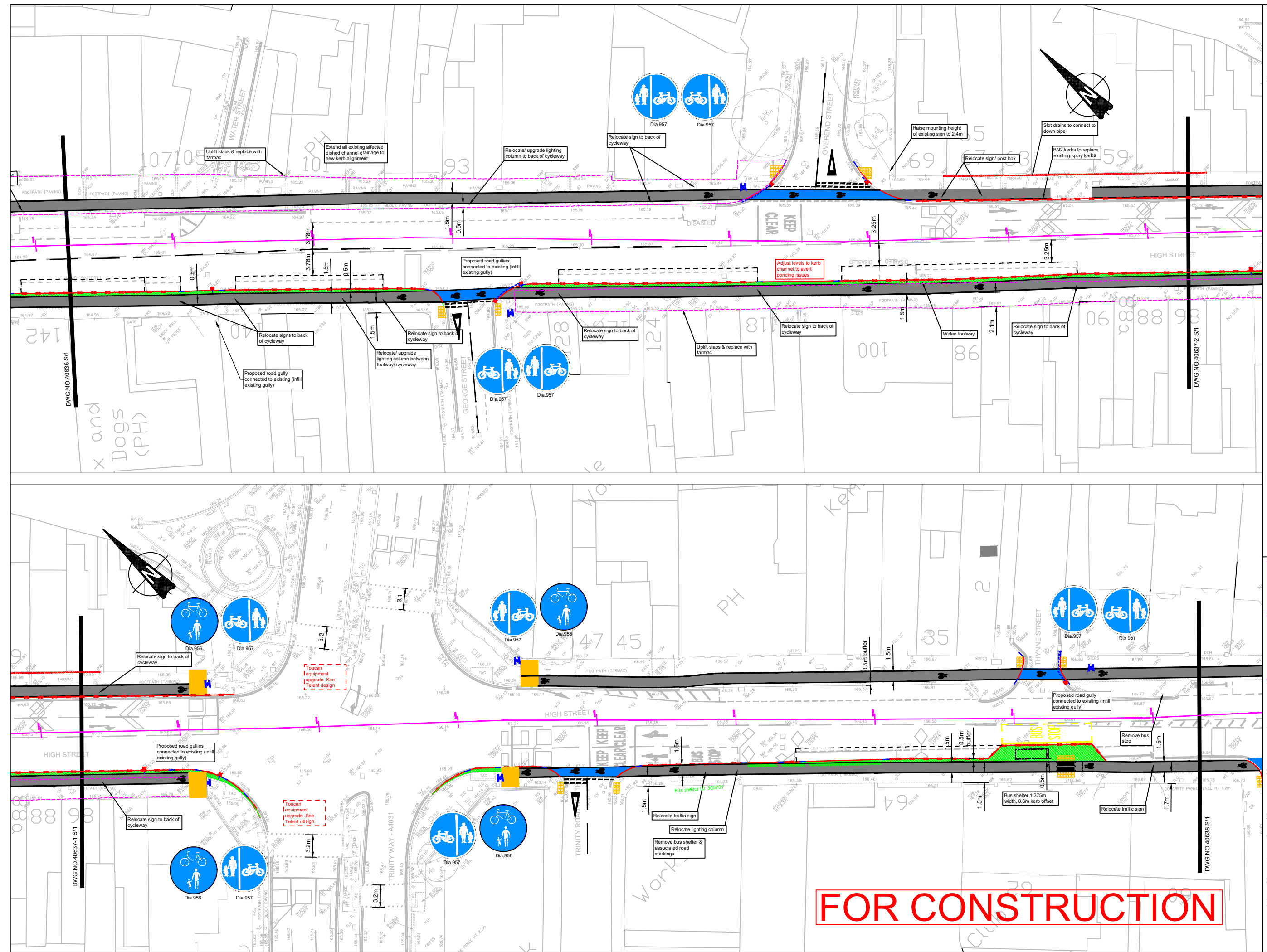
**PROJECT**  
 Towns Fund Improvements – 2-way Cycleway

**LOCATION**  
 High St/Roebuck Lane, West Bromwich

**DRAWING TITLE**  
 General Arrangement Option 1 – Sheet 2

SCALE	1:250m
ISSUED BY	S. Chadwick
DATE	April 2022
DRAWN BY	JF
DRAWING No	40637 S/1

**FOR CONSTRUCTION**



**IMPORTANT**  
 The Contractor will be responsible for setting out the work. All dimensions must be obtained from or checked on site. Figured dimensions to be used in preference to scale.

**NOTES**

- This drawing to be read in conjunction with site clearance drawing.
- For footway construction see specification below.
- For kerb construction, refer to SMBC standard detail drawing SD/1100/01.
- For sign arrangement, refer to SMBC standard detail drawing SD/1200/03.
- For uncontrolled pedestrian crossing & modular paving, refer to SMBC standard detail drawings SD/1100/05 & SD/1100/10 respectively.
- All signs and road markings to be in accordance with The Traffic Signs Regulations and General Directions 2016 (TSRGD) and Chapter 5 Road Markings 2018.
- Signs to be mounted on 60.1mm SHS steel posts and mounting height 2300mm in accordance with SMBC standard details: SD/1200/03 R1 sign arrangement; SD/1200/04 Sign clearances; Unless stated otherwise.
- All existing utility service chamber covers to be reset flush with new surfaces.
- Statutory Undertakers searches/ checked prior to any excavations.

**KEY**

- BN2 Kerb alignment
- BN (drop kerbs)
- HB Transition kerbs (left/ right hand)
- Footway widening (Full depth construction)
- Proposed Road Traffic Sign

Sign Reference	Dia. 956 & 957
Height	600 mm
Width	300 mm
Depth	100 mm
Area	0.07 m <sup>2</sup>
Material	Class RA2 (12899-1:2007)
Mount Height	2300

Sign Reference	TS11 (Dra. 956)
Height	480 mm
Width	480 mm
Depth	100 mm
Area	0.15 m <sup>2</sup>
Material	Class RA2 (12899-1:2007)
Mount Height	2300

**FOOTWAY CONSTRUCTION SPECIFICATION**  
 All materials are to be supplied and laid in accordance with BS EN 13108. Granite aggregate only, Appendix 3 - Guide to the design of new streets.  
**SURFACE COURSE**  
 20mm (6mm) Nominal size  
**BINDER COURSE**  
 50mm (20mm) Nominal size  
**SUB BASE**  
 100mm Type 1 Stone (MCHW clause 8)



**HIGHWAYS GROUP MANAGER**  
 Robin Weare, B.Sc, C.Eng, M.I.C.E, MBA  
 Sandwell Council House  
 Freeth Street Oldbury  
 West Midlands B69 3DE  
 E-mail: Highways@sandwell.gov.uk

**PROJECT**  
 Towns Fund Improvements – 2-way Cycleway

**LOCATION**  
 High St/Roebuck Lane,  
 West Bromwich

**DRAWING TITLE**  
 General Arrangement  
 Option 1 – Sheet 3

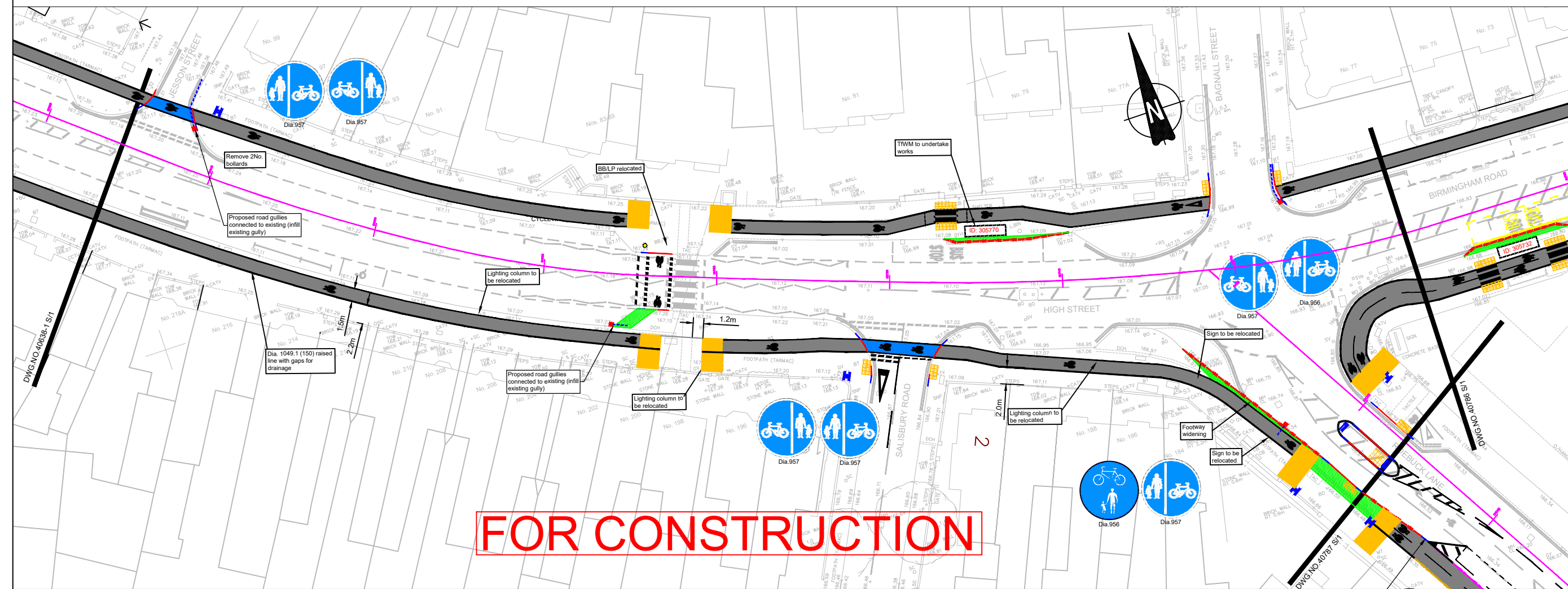
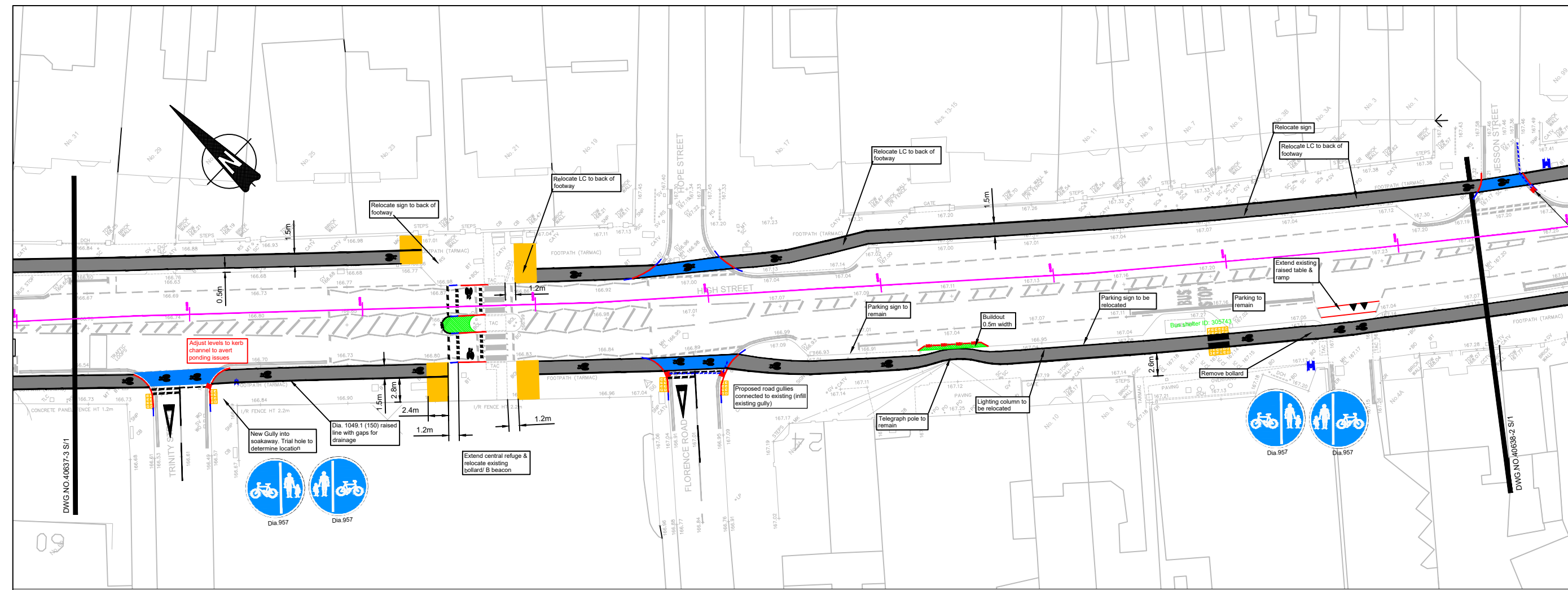
**SCALE** 1:250m

**ISSUED BY** S. Chadwick

**DATE** April 2022

**DRAWN BY** JF

**DRAWING No** 40638 S/1



**FOR CONSTRUCTION**






**IMPORTANT**  
 The Contractor will be responsible for setting out the work. All dimensions must be obtained from or checked on site. Figured dimensions to be used in preference to scale.

**NOTES**

- This drawing to be read in conjunction with site clearance drawing.
- For footway construction see specification below.
- For kerb construction, refer to SMBC standard detail drawing SD/1100/01.
- For sign arrangement, refer to SMBC standard detail drawing SD/1200/03.
- For uncontrolled pedestrian crossing & modular paving, refer to SMBC standard detail drawings SD/1100/05 & SD/1100/10 respectively.
- All signs and road markings to be in accordance with The Traffic Signs Regulations and General Directions 2016 (TSRGD) and Chapter 5 Road Markings 2018.
- Signs to be mounted on 60.1mm SHS steel posts and mounting height 2300mm in accordance with SMBC standard details:  
 SD/1200/03 R1 sign arrangement;  
 SD/1200/04 Sign clearances;  
 Unless stated otherwise.
- All existing utility service chamber covers to be reset flush with new surfaces.
- Statutory Undertakers searches/ checked prior to any excavations.

**KEY**

-  BN2-LF Kerb alignment (laid flat)
-  HB2-LF Kerb alignment (laid flat)
-  Footway widening
-  Proposed Road Traffic Sign

Sign Reference	Dia. 956 & 957
Shape	300 mm
Width	300 mm
Area	0.07 m <sup>2</sup>
Material	Class B22 (13899-1-2007)
Mount Height	2300

**FOOTWAY CONSTRUCTION SPECIFICATION**  
 All materials are to be supplied and laid in accordance with BS EN 13108. Granite aggregate only, Appendix 3 - Guide to the design of new streets.

**SURFACE COURSE**

20mm (6mm) Nominal size

**BINDER COURSE**

50mm (20mm) Nominal size

**SUB BASE**

100mm Type 1 Stone (MCHW clause 8)



**HIGHWAYS GROUP MANAGER**  
 Robin Weare, BSc, C.Eng, M.I.C.E, MBA  
 Sandwell Council House  
 Freeth Street Oldbury  
 West Midlands B69 3DE  
 E-mail: Highways@sandwell.gov.uk

**PROJECT**  
 Towns Fund Improvements –  
 2-way Cycleway

**LOCATION**  
 High St/Roebuck Lane,  
 West Bromwich

**DRAWING TITLE**  
 General Arrangement  
 Option 1 – Sheet 5

**SCALE** 1:250m

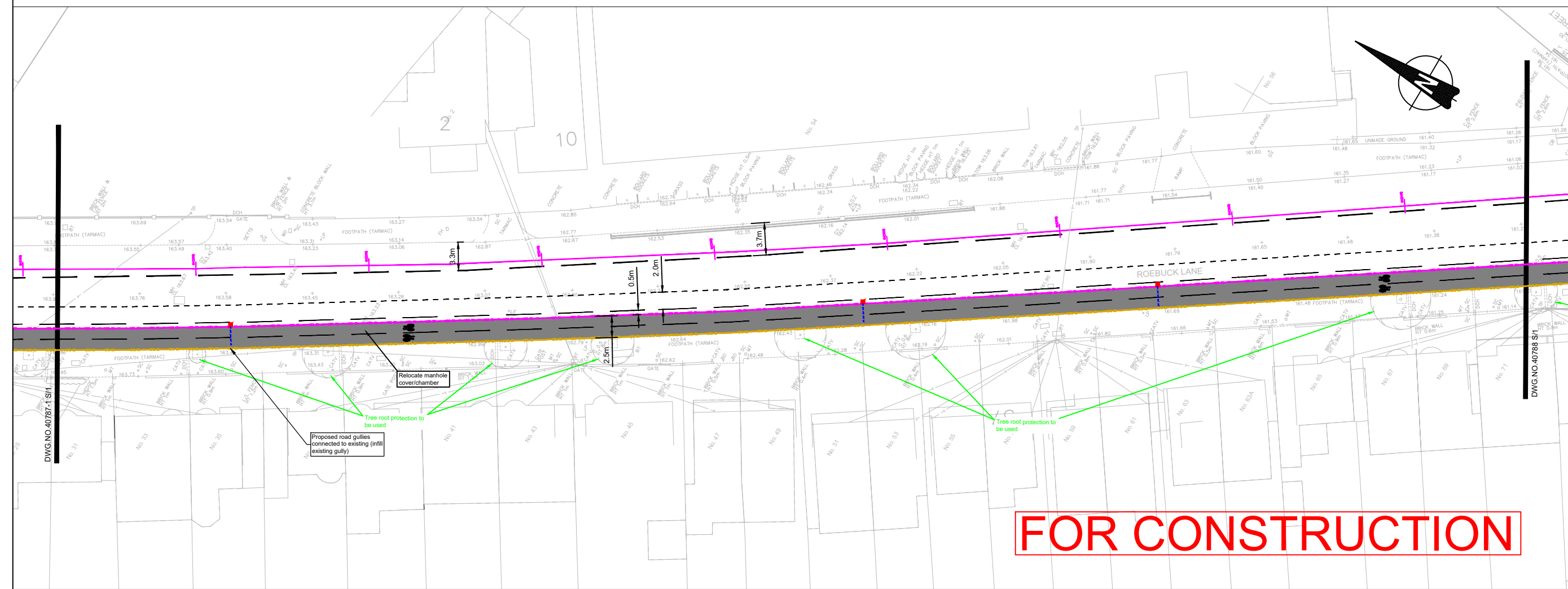
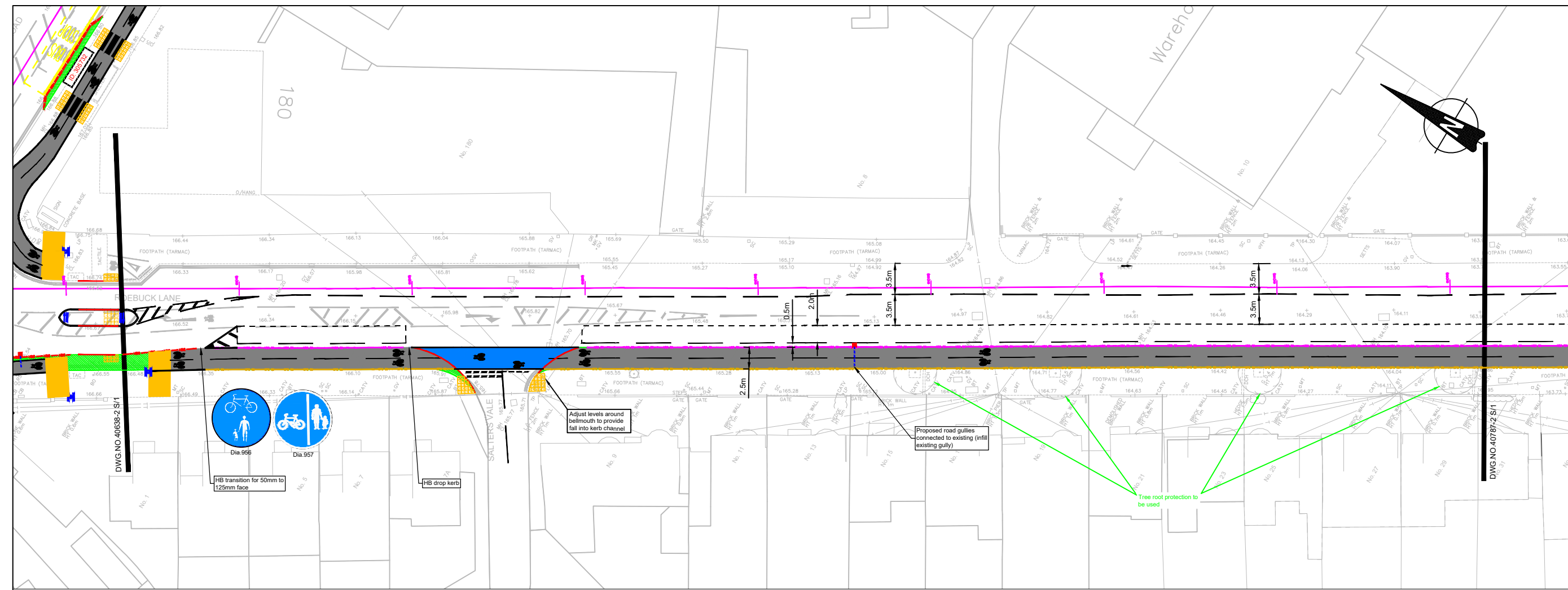
**ISSUED BY** S. Chadwick

**DATE** April 2022

**DRAWN BY** JF

**DRAWING No** 40787 S/1

**FOR CONSTRUCTION**



**IMPORTANT**  
 The Contractor will be responsible for setting out the work. All dimensions must be obtained from or checked on site. Figured dimensions to be used in preference to scale.

**NOTES**

- This drawing to be read in conjunction with site clearance drawing.
- For footway construction see specification below.
- For kerb construction, refer to SMBC standard detail drawing SD/1100/01.
- For sign arrangement, refer to SMBC standard detail drawing SD/1200/03.
- For uncontrolled pedestrian crossing & modular paving, refer to SMBC standard detail drawings SD/1100/05 & SD/1100/10 respectively.
- All signs and road markings to be in accordance with The Traffic Signs Regulations and General Directions 2016 (TSRGD) and Chapter 5 Road Markings 2018.
- Signs to be mounted on 60.1mm SHS steel posts and mounting height 2300mm in accordance with SMBC standard details:

SD/1200/03 R1 sign arrangement;  
 SD/1200/04 Sign clearances;  
 Unless stated otherwise.  
 All existing utility service chamber covers to be reset flush with new surfaces.  
 Statutory Undertakers searches/ checked prior to any excavations.

- KEY**
- BN2-LF Kerb alignment (laid flat)
  - HB2-LF Kerb alignment (laid flat)
  - Footway widening
  - Proposed Road Traffic Sign

Sign Reference	Dia. 956 & 957
Height	200 mm
Width	300 mm
Depth	0.07 m
Material	Class RA2 (12899-1-2007)
Mount Height	2300

**FOOTWAY CONSTRUCTION SPECIFICATION**  
 All materials are to be supplied and laid in accordance with BS EN 13108. Granite aggregate only, Appendix 3 - Guide to the design of new streets.  
**SURFACE COURSE**  
 20mm (6mm) Nominal size  
**BINDER COURSE**  
 50mm (20mm) Nominal size  
**SUB BASE**  
 100mm Type 1 Stone (MCHW clause 8)



**HIGHWAYS GROUP MANAGER**  
 Robin Weare, BSc, C.Eng, M.I.C.E, MBA  
 Sandwell Council House  
 Freeth Street Oldbury  
 West Midlands B69 3DE  
 E-mail: Highways@sandwell.gov.uk

**PROJECT**  
 Towns Fund Improvements –  
 2-way Cycleway

**LOCATION**  
 High St/Roebuck Lane,  
 West Bromwich

**DRAWING TITLE**  
 General Arrangement  
 Option 1 – Sheet 6

**SCALE** 1:250m

**ISSUED BY** S. Chadwick

**DATE** April 2022

**DRAWN BY** JF

**DRAWING No** 40788 S/1

